

Recommendation to support the status quo in Ysgol Pentrecelyn

Wellbeing Impact Assessment Report

This report summarises the likely impact of a proposal on the social, economic, environmental and cultural well-being of Denbighshire, Wales and the world.

Assessment Number:	86
Brief description:	The impact of maintaining the status quo at the school.
Date Completed:	08/11/2016 11:18:45 Version: 6
Completed By:	Lisa Walchester
Responsible Service:	Education & Children Services
Localities affected by the proposal:	Ruthin,

IMPACT ASSESSMENT SUMMARY AND CONCLUSION

Before we look in detail at the contribution and impact of the proposal, it is important to consider how the proposal is applying the sustainable development principle. This means that we must act "in a manner which seeks to ensure that the needs of the present are met without compromising the ability of future generations to meet their own needs."

Score for the sustainability of the approach

Does it need more thought?

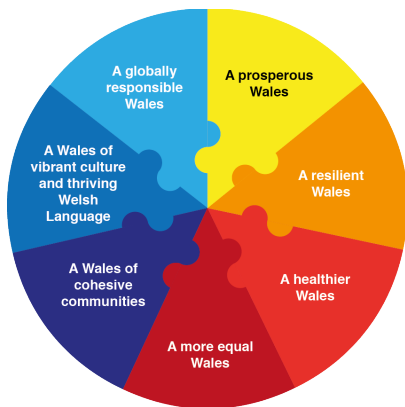
(1 out of 4 stars)



Actual score: 8/ 24.

Summary of impact

Wellbeing Goals



A prosperous Denbighshire	Neutral
A resilient Denbighshire	Neutral
A healthier Denbighshire	Neutral
A more equal Denbighshire	Neutral
A Denbighshire of cohesive communities	Neutral
A Denbighshire of vibrant culture and thriving Welsh language	Positive
A globally responsible Denbighshire	Neutral

Main conclusions

As this proposal is to maintain the status quo at Ysgol Pentrecelyn, many of the implications are neutral. Within the context of the impact assessment the requirement is to review long term sustainability with a 50 year span. Within this context the option of maintaining the status quo would not be a sustainable, long term (50 years) solution. This is because issues in regards to the condition of the school will remain and due to the size of the school currently and the projected pupil numbers, to invest significantly in Ysgol Pentrecelyn would go against Denbighshire County Council's Modernising Education Policy 1: Models for Primary School Organisation. Whilst retaining the school is positive for the Welsh language, the suitability of the school facilities in the long term would need examination, as the Local Authority would do with any other school in the County.

THE LIKELY IMPACT ON DENBIGHSHIRE, WALES AND THE WORLD

A prosperous Denbighshire

Overall Impact:	Neutral
Justification for Impact:	The impact is neutral- the status quo will be maintained. The employment of staff and educational provision for learners will continue. As with all Denbighshire schools any decision regarding investment or improvements work will be considered alongside other schools in the context of investment in the overall school estate as part of the long term asset management process.

Positive consequences identified:

Education provision retained in the area.
Employment for the teachers and staff at the school continues.
The Pentrecelyn Ti a Fi will still be able to operate in the school.

Unintended negative consequences identified:

Limited opportunities for staff development given the size of the school. Facilities could impact on curriculum delivery.

Mitigating actions:

The Local Authority and GwE (Regional school improvement service) will continue to work with the school to ensure standards are maintained.

A resilient Denbighshire

Overall Impact:	Neutral
Justification for Impact:	As the proposal is focused on maintaining the status quo for the school, the proposal is neutral because there is no change.

Positive consequences identified:

Unintended negative consequences identified:

The energy efficiency of the building could result in increased running costs as fuel costs rise.

Mitigating actions:

The school will have the opportunity to be included in the Local Authority's planned general maintenance works for schools in order to improve their energy efficiency.

A healthier Denbighshire

Overall Impact:	Neutral
Justification for Impact:	Pupils will still be able to continue to attend the school. However the identified issues with regard to suitability and sustainability of the built environment will remain. This could impact on flexibility in curriculum delivery going forward.

Positive consequences identified:

Pupils attend their nearest school.

Pupils do not have to move schools, which some stakeholders would find as a positive.

Unintended negative consequences identified:

No improvements made on their learning environment.

Mitigating actions:

The Local Authority will continue to support the school.

A more equal Denbighshire

Overall Impact:	Neutral
Justification for Impact:	The school will remain open, however access issues will remain. The schools position means that the majority of people will arrive by car or other vehicles, the road does not have a pedestrian footpath

Positive consequences identified:

Maintain access to Welsh medium education in the area.

Unintended negative consequences identified:

Access issues will still remain on the site in terms of disabled access to the school.

Mitigating actions:

The Local Authority will work closely with the school if access issues need to be addressed.

A Denbighshire of cohesive communities

Overall Impact:	Neutral
Justification for Impact:	Ysgol Pentrecelyn will remain an important part of village life with local pupils attending the school from the immediate area. Welsh medium education will be available to those who opt for this provision without having to travel to the next appropriate school. The condition of the school in the long term needs consideration as major investment in the school is not in accordance with our policy.

Positive consequences identified:

School to continue usual safeguarding practices.

The community still have an asset which they can access for other uses i.e. lunch club, out of school hours use.

Maintain existing community links for example with the chapel.

The school remaining open could encourage more families with young children to attend the school.

Unintended negative consequences identified:

No significant change in the learning environment of the school.

Mitigating actions:

A Denbighshire of vibrant culture and thriving Welsh language

Overall Impact:	Positive
Justification for Impact:	Ysgol Pentrecelyn will remain open as Welsh medium school for pupils who wish for a Welsh medium education. The school will continue as they always have with a strong Welsh ethos.

Positive consequences identified:

Welsh medium education will remain in the community.
Preserving the Welsh medium offer in the community.
Protects the heritage in the local community.

Unintended negative consequences identified:

Whilst retaining the school will mean the proposal has a positive impact on the Welsh language and the community, the longer term concerns around the condition of the school and the difficulties surrounding investment will need consideration.

Mitigating actions:

A globally responsible Denbighshire

Overall Impact:	Neutral
Justification for Impact:	Maintaining what is currently available in the school building.

Positive consequences identified:

Will allow the Pentrecelyn Ti a Fi group to continue to use the school weekly and a lunch club termly.

Unintended negative consequences identified:

Mitigating actions: